



## Digital television reception in Craigmores/Hillbank

### Why have I received this fact sheet?

This fact sheet provides information about tuning to the digital television services broadcast from a new transmission site near the corner of Uley and Adams Roads in Elizabeth Downs.

A survey has found that the digital television signals in some parts of the Craigmores/Hillbank area are not adequate. To improve this situation, a new digital television broadcast facility is being established to provide signals to this area. The facility commenced test transmissions at the end of May and is expected to be fully commissioned by around mid June 2010. Signals from this facility are also expected to extend to the developing area of Blakeview.

Funding assistance for the Craigmores/Hillbank facility has been provided by the Australian Government through its TV Towers initiative. The facility has been installed by the Australian Broadcasting Corporation (ABC), which will operate and maintain it on behalf of the Adelaide broadcasters.

The full suite of digital television services will be available from the Craigmores/Hillbank facility, including ABC, SBS, Seven, Nine and Ten's main channels, as well as digital channels ABC2, ABC3, SBS TWO, ONE HD, GO! and 7TWO. In addition, the ABC is planning to commence a 24 hour digital television news channel in 2010.

Householders will need a set-top box or an integrated digital television (a TV with a digital tuner in it), and a suitable external roof-top antenna, to receive the Craigmores/Hillbank services.

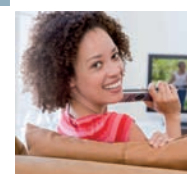
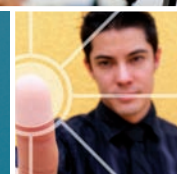
### Tuning to the new channels

All five Adelaide broadcasters provide analog and digital television services from the main transmission site on Mt Lofty. The community television service, C31 Adelaide, provides an analog service from Mt Lofty and is expected to commence a digital television service in 2010. The five Adelaide broadcasters also provide analog and digital services from a site in Grenfell Street in Adelaide, which serves the Adelaide Foothills. In addition, the ABC and the Special Broadcasting Service (SBS) broadcast television services from a site in Elizabeth South. While your television antenna may be pointed at one of these sites, the Elizabeth Downs facility serving Craigmores/Hillbank might provide better reception at your home.


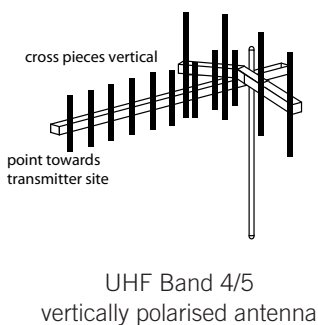




Household antennas may have been designed to receive a specific set of analog and/or digital television channels from a particular transmission site. As a result, these may not perform as well as they need to when trying to tune to channels broadcast from a new site.

Householders need to be using the correct external roof-top antenna (see diagram over page), which is pointed at the most appropriate broadcast site. In some areas and depending on which digital television signals are strongest, it might be possible to tune to services from more than one transmission site.

Television signals travel in almost straight lines and are unable to travel over or penetrate large obstructions. This means that the television signal might be weak, particularly in hilly terrain. As a result, depending on your location and the number of television outlets installed in your home you might need to install a dedicated antenna and new cabling to receive an adequate signal. A qualified television technician will be able to provide advice on this.



## Craigmore/Hillbank services—channel and antenna information

Elizabeth Downs digital television transmission site— UHF Bands 4 and 5 (Vertical Polarisation)		
TV Network	Channel	Polarisation of TV Antenna
	34	
	35	
	36	
	37	
	39	

### Who should I talk to?

A qualified digital television antenna installer will be able to measure the strength of television signals at various locations around your home and recommend the most appropriate digital television transmission site (Mt Lofty, Grenfell Street or Elizabeth Downs) and the type of antenna. An installer can also check your existing antenna system (if you have one) and the adequacy of cabling and connectors, and provide you with advice.

Contact details for television antenna installers should be available in your local community service directory or the Yellow Pages.

### Digital television switchover

The Australian Government switchover timetable sets out a phased, region-by-region transition to digital television. The digital switchover is scheduled to begin in the first half of 2010 in the Mildura/Sunraysia licence area, progressing throughout regional and metropolitan Australia to conclude in the Sydney, Melbourne and Adelaide markets, and in remote area markets in the second half of 2013.

### Further information

ABC: the ABC's Reception Advice Line operates 8.00 am–7.00 pm (EST) Monday–Friday, and can be contacted on 1300 139 994 (local call rate). The ABC website also carries reception-related information, visit [www.abc.net.au/reception/digital/](http://www.abc.net.au/reception/digital/)

SBS: technical information and advice is available from SBS on 1800 500 727 (free call) or by emailing [technical@sbs.com.au](mailto:technical@sbs.com.au). Transmission information is also available from the SBS website, visit [www20.sbs.com.au/transmissions/](http://www20.sbs.com.au/transmissions/)

Digital Switchover: for any other information about digital switchover, you can call the Digital Ready Information Line on 1800 20 10 13. You can also find information about switchover, including answers to commonly asked questions, on the Digital Switchover Taskforce's website, visit [www.digitalready.gov.au](http://www.digitalready.gov.au)

For more information go to [www.dbcde.gov.au](http://www.dbcde.gov.au)